

CENTRE AQUATIQUE et SPORTIF de DIEPPE

DIEPPE AQUATIC and SPORTS CENTRE

DIEPPE, NEW BRUNSWICK



The Dieppe Aquatic Centre was conceived as a major contribution to the infrastructure of the City of Dieppe, one which would integrate recreational, sporting and health activities. An adaptable building, the first part of a multi Sport and Recreational Complex to include a Field House and Tennis Centre and as the West Anchor of Uptown Dieppe. It is a place which is welcoming, restful and designed for use by individuals and families. Simplicity of form and elegant diagonal access, special attention given to the integration of the surrounding landscape and attention to the environment, aspects of the City of Dieppe Environmental Plan were to be key elements of the project.

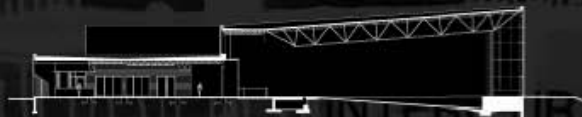
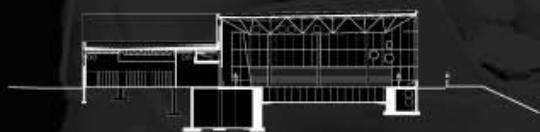
The project was designed as a simple and joyful element that expressed the concept of recreational activity while being efficient and welcoming. It includes a 6 lane 25 meter pool for competitions, a two lane warm-up pool and a family pool with hydro jets, slides, pirate ship, etc. Access is through a welcoming Observation Area which also houses the Reception and leads users to the supporting facilities. These include a Lounge, Party Room, and Administrative Offices.

The architectural treatment is at once simple and striking with the use of colours and materials. Natural light floods the activity spaces and materials are chosen to enhance the quality of the users' experience while being very conscious of the corrosive environment created by the pool. Special care was taken in planning the access and the landscaping lakes are designed to handle all surface water on site and use the retention ponds as integral features of the design.

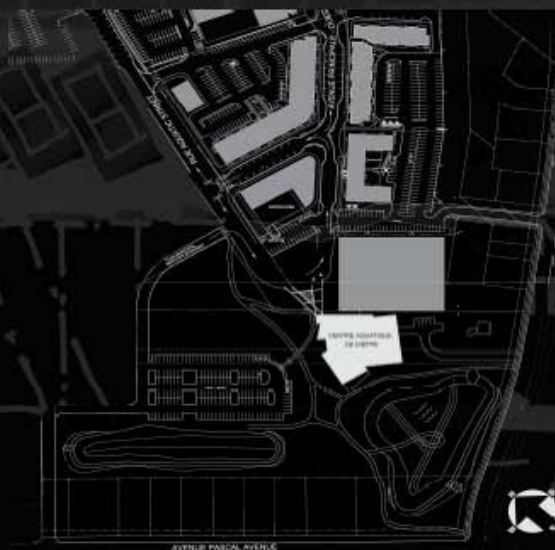
The Dieppe Aquatic Centre and its simple overall form create a very striking image and identity which is emphasized by a play of diagonal lines, bubble round windows, colours and materials. Its large glazed areas contrast with the playful solids to give it a strong identity which is at the same time warm and welcoming. It has become a powerful image and illustration of the strength and forward thinking attitude of the City of Dieppe.



PLAN



SECTIONS



SITE PLAN

The bold coloured change rooms creates an interesting, inviting journey on the way to the pool.

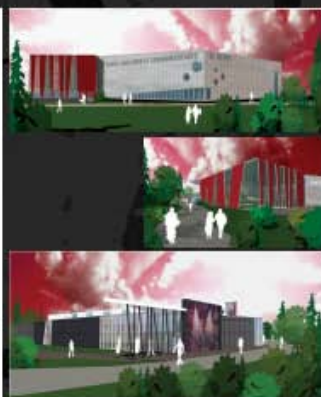


It is fundamental that the architecture reveal and support the recreational quality of the Aquatic Centre. Our urban and architectural intervention has created a place of interactivity. A social place par excellence for sports, meetings and interaction.

The two storey serpentine wall in clad in coffee coloured 'terried' wood panelling, creating a warm and rich atmosphere in the pool area.



ELEVATIONS



"With its colorful steel paneling and floor to ceiling glass walls that allow light to permeate the interior, the Aquatic Centre is an impressive architectural masterpiece that sits in harmony with the natural environment."



ELEVATIONS

The approach to design is founded on construction simplicity and based on primary materials and passive resources.

The envelope is composed of prefabricated insulated steel panels. The quality and finesse of details is provided by the utilization of large openings, glazed entrance canopies and the interplay of color between these elements.

AVENUE PASCAL AVENUE